



Stone House, 9 Weymouth Street,  
, W1W

Offers In Excess Of £1,300,000, Leasehold

NAPIER WATT

T: 0207 935 0011  
E: [enquiries@napierwatt.co.uk](mailto:enquiries@napierwatt.co.uk)  
W: [napierwatt.co.uk](http://napierwatt.co.uk)

35 Berkeley Square, Mayfair, London, W1J 5BF







## Description

Napier Watt are pleased to offer for sale this stunning, interior designed, two bedroom, two bathroom first floor apartment, set to the rear of this popular purpose built block. In addition, features include excellent security provided, porter and lift.

Stone House is located at the easterly end of Weymouth Street, on the junction of Hallam Street, approximately midway between Marylebone and Fitzrovia. It is only moments walk away from many fine designer boutiques and leisure facilities including Regents Park. EPC C

## Key Features

- PORTER
- FANTASTIC LOCATION
- PASSENGER LIFT
- WALKING DISTANCE FROM MARYLEBONE VILLAGE

## Terms

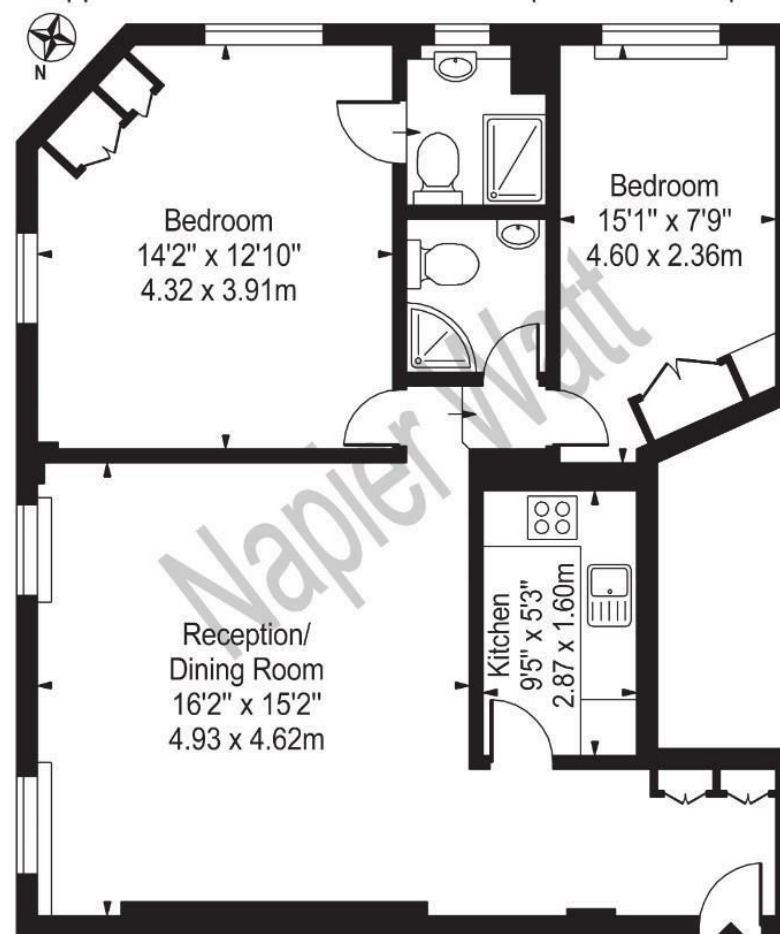
Leasehold: 86 Years Remaining.

EPC C

Council Tax Band F

## Weymouth Street

Approx. Gross Internal Area 801 Sq Ft - 74.42 Sq M



### First Floor

For Illustration Purposes Only - Not To Scale

This floor plan should be used as a general outline for guidance only and does not constitute in whole or in part an offer or contract. Any intending purchaser or lessee should satisfy themselves by inspection, searches, enquiries and full survey as to the correctness of each statement. Any areas, measurements or distances quoted are approximate and should not be used to value a property or be the basis of any sale or let.

IMPORTANT: We would inform prospective purchasers that these sales particulars have been prepared as a general guide only. A detailed survey has not been carried out, nor the services, appliances and fittings tested. Room sizes should not be relied upon for furnishing purposes and are approximate. If floor plans are included, they are for guidance only and illustration purposes only and may not be to scale. If there are any important matters likely to affect your decision to buy, please contact us before viewing the property.